

JUL 22 2005

Index No. J-17

# CERTIFICATE OF LOCATION OF GOVERNMENT CORNER

NORTHEAST Corner of Section 15, Township 108 N, Range 43 W

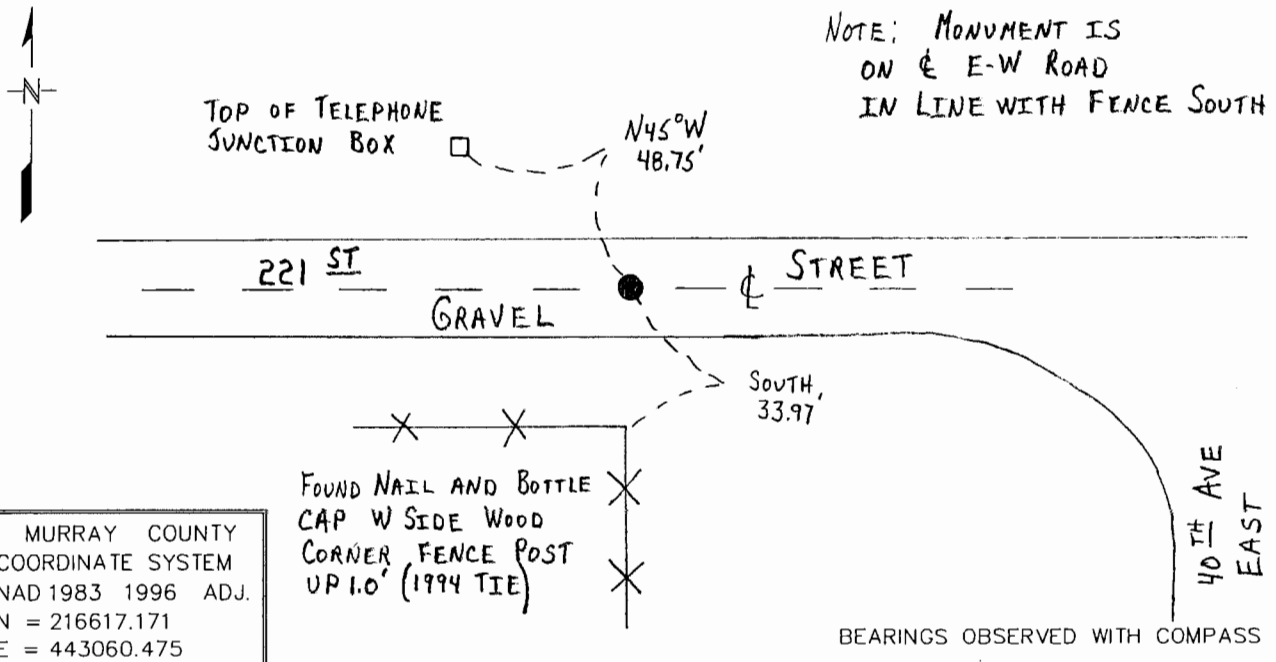
5th Principal Meridian, State of Minnesota, County of MURRAY

At the corner location shown on the sketch:

■ On 9/29/03 found a 6 INCH DIAMETER CONCRETE CYLINDER WITH "+" ON TOP,  
DATE DOWN 0.7', WITH A STEEL PIN ON ITS SOUTH SIDE

■ left monument as found,  lowered monument,  removed monument (explain)

On \_\_\_\_\_ Placed a \_\_\_\_\_  
DATE



MURRAY COUNTY  
COORDINATE SYSTEM  
NAD 1983 1996 ADJ.  
N = 216617.171  
E = 443060.475

Statement of evidence for this corner location is on back of this page.

WMA00165.00.00.01

I certify that this document was researched and prepared by me or under my direct supervision.

SIGNATURE Bruce W. Sheppard DATE 7-19-05 License Number 17003

Title:  Land Surveyor  Professional Engineer  County Surveyor  County Engineer

Northeast Corner Section 15, Township 108 North, Range 43 West

The DNR Division of Lands and Minerals contacted the following for survey information:

Minnesota Secretary of State's Office  
Murray County Recorder's Office  
Murray County Highway Engineer's Office  
Madsen Land Surveying, Inc. of Fairmont

1866 U.S. General Land Office notes, obtained from the Secretary of State's Office, show the corner marked with a post in a mound.

No A Surveyor's Record Book containing ties to government corners, obtained from the  
Date County Highway Engineer's Office, shows a concrete stone at corner, but does not indicate if it was found or set, with the following ties:

reference point, tack in corner fence post, northwest, 34.1 feet  
reference point, tack in second fence post, northeast, 57.7 feet

1957 January, a page in a DNR field notebook, lists the following ties to corner, which were obtained from County Surveyor's Office:

corner fence post, northwest, 34.1 feet  
second fence post, northeast, 57.7 feet

A description of what kind of monument was found or set at corner is not given. The corner was found to be:

2650.9 feet from the north quarter corner of Section 14

1963 September, a page in a DNR field notebook, shows that a railroad spike was set at an assumed location for the corner with the following ties:

on the center line of an east-west road  
in line with fences north and south

1994 July, compiled government corner ties, obtained from the County Highway Engineer's Office, show that a concrete monument was found at corner, 6 inches below the surface. The following ties were taken to the concrete monument:

nail and cap in power pole, southwest, 46.65 feet  
nail and cap in post, south, 33.98 feet  
nail and cap in TCT, northwest, 49.00 feet

An 8 inch long steel pin was set on the south side of the monument.

2003 September 29, the DNR Division of Lands and Minerals found a 6 inch diameter concrete cylinder with a "+" on top at corner, down 0.7 of a foot, with a steel pin on its south side. Searched for and found one record tie as show on the sketch of reference ties. The concrete cylinder was found to be:

on the centerline of an east-west gravel road  
in line with a fence south  
2652.95 feet from the north quarter corner of Section 14

Analysis of the above information led the DNR Division of Lands and Minerals to conclude that the found concrete monument marks the location of the corner.